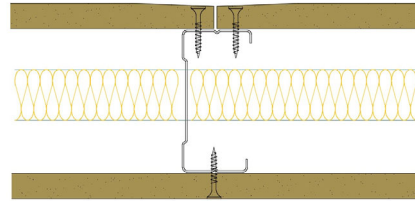


70-B-51(25) - SPEEDLINE System Data Sheet - Version V1 (24-10-23)

SPEEDLINE 70mm 'C' Stud Partition @600mm Ctrs,
with BG Gyproc 12.5mm WallBoard each side,
25mm APR



System Performance Breakdown

Fire Resistance:

BS476 Part 22:1987:

Test Ref:

Max Height:

Thickness:

Duty Grade: BS 5234: Part 2:1992:

Sound Insulation:

30/30 Minutes (Integrity/Insulation).

BRE Report P102396-1011A

Refer to Speedline Specification Clause

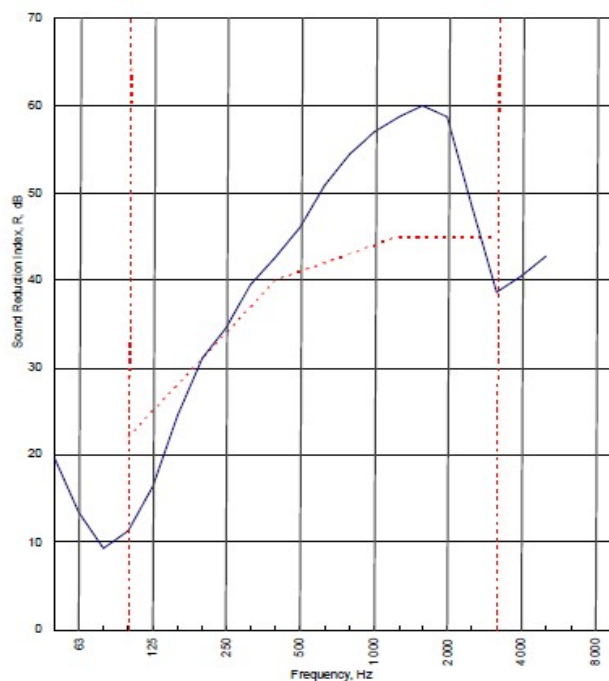
97 mm. (At Base Track, Excluding Finishes)

Medium - Annexes A-F

41 R_w dB, Date Tested or Assessed Against - 14/07/2011

Test Code:	H17484AA
Test Date:	14/07/2011

Freq. Hz	R dB
50	19.9
63	13.5
80	9.3
100	11.3
125	16.4
160	24.5
200	31.0
250	34.5
315	39.5
400	42.6
500	46.0
630	50.8
800	54.4
1 000	56.9
1 250	58.6
1 600	59.9
2 000	58.6
2 500	48.4
3 150	38.6
4 000	40.4
5 000	42.8
6 300	
8 000	
10 000	



----- Curve of reference values (ISO 717-1)

Rating according to BS EN ISO 717-1:1997	R_w (C;Ctr) = 41 (-4;-11) dB		
Evaluation based on laboratory measurement results obtained by an engineering method:	Max dev. 10.7 dB at 100 Hz		
	$C_{50-3150} = -5$ dB	$C_{50-5000} = -5$ dB	$C_{100-4000} = -3$ dB
	$C_{8,50-3150} = -15$ dB	$C_{8,50-5000} = -15$ dB	$C_{8,100-6000} = -11$ dB

TESTED AT ONE OF THE UKAS ACCREDITED LABORATORIES BELOW

B.T.C
(H-Ref on Graph)



B.R.E



AIRO



S.R.L

